

Goliath bird-eating Spider

DISTRIBUTION

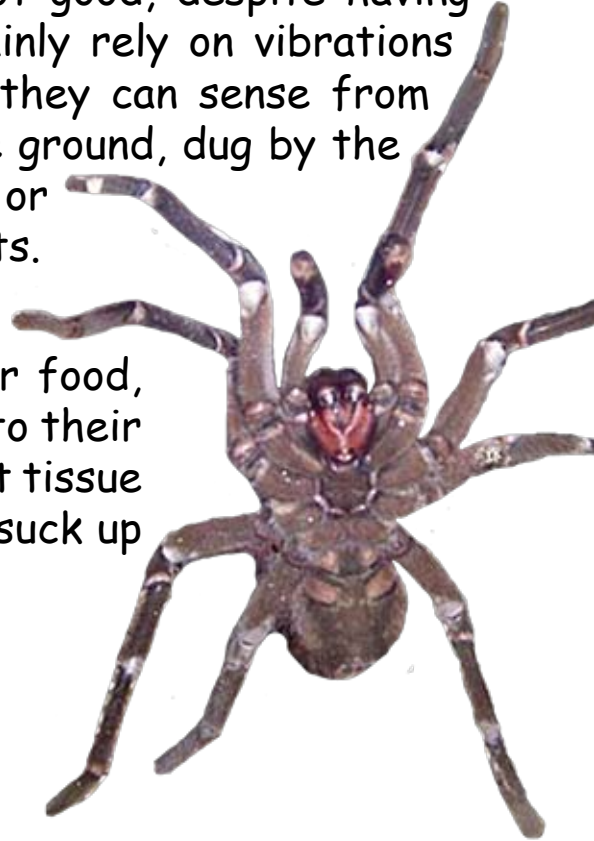


Their eyesight is not good, despite having 8 eyes and they mainly rely on vibrations in the ground that they can sense from their burrows in the ground, dug by the spiders themselves, or abandoned by rodents.

They don't have teeth to chew their food, but regurgitate digestive juices onto their victim, the juices break down the soft tissue making it possible for the spider to suck up the liquid and eat its meal.



Theraphosa blondi



It's natural enemies are spider wasps, some snakes, and other tarantulas. The spiders are most vulnerable during molting when they are fragile and can't move very well, smaller insects can easily kill a tarantula at this time. The most dangerous enemy the spider has is man and the destruction of its habitat.

FACTS & FIGURES

Where found	Northern South America
Habitat	wet swamps and marshy areas deep within the primary rainforest
Diet	Crickets, moths, frogs, mice, and lizards. RARELY BIRDS!
Average size	25-30cm
Average weight	Up to 170g
Number of eggs	100-400
Time to hatch	Up to 2 months
Maximum lifespan	Females 20-25 years Males 3-6 years